



akvia[®] digitaltech.
+applications



Smart LPG Tracking & Operations Management



AwanTrack corresponds to level tracking and monitoring devices which can be installed various kinds of LPG Tanks & Trailers also integrated with all-in-one Awan Platform easily. AwanTrack solution enables location and level tracking for trailers and storage tanks, driver performance analysis, fast reaction time for critical levels for supply, fuel management and better service for customers. Together with all-in-one Awan Platform, AwanTrack delivers task fulfillment tracking based on the location of your vehicles and assets.

KEY BENEFITS

- Vehicle Tracking
- Geofencing
- Task Fulfillment Tracking & Management
- Asset Location Tracking
- Asset Maintenance Tracking
- Live Map View
- Digital Operations on Cloud
- Fleet and Storage level tracking
- Easy to Install
- Easy to Use
- Customer-wise consumption Planning and Report
- Driver performance analysis and Efficient routes for filling points
- Trailer filling tracking
- Better resource planning
- Better Procurement Planning and Less Storage Costs
- Real Time Call for Fill Notification
- End-User Satisfaction, Non-Stop Gas Service
- Easy fulfillment realization
- Periodic reporting to analyze operation and sales performance
- Early filling alert for critical Levels of tanks Via SMS/e-mail/ App Notification
- All-in-One Solutions Tanks-Tracking-Gas Supply and Delivery
- Easy to Insert New Tanks and Trailers in Tracking
- Last-Long hardware
- Compatible with Rochester Level Gauges

COMPETIBILITY





FEATURES

- Reading fullness level of each types of tanks and tankers
- Durable sensors with M2M connectivity
- Automated orders, customers and task management
- Location tracking, task realization and performance control
- Alerts via mobile app & E-mail
- Payment system integration

FEATURES

- Driver application to ensure transparent communication
- Easy to use dashboards for top management
- Analysis and reporting capabilities
- Support online upgrade

📶 Reading

Sensors has been designed and built for precise measuring , fast reading speed, high accuracy rate, strong anti-interference ability, good protection performance and easy installation. Also with its smart software, it does not only identify the fill level of tanks but also automatically detects task realization important incidents, such as tank location displacements.

↔ Communications

Collected data, completed task and location data are automatically transferred to the Evreka servers via Machine Machine connectivity options. Administrators can check the gathered live data any time through the Evreka dashboard from any internet connected device in anywhere at anytime. Alarms can be set, via the web based system, to inform the user of detected incidents such as incompleted tasks and customer complaints via e-mail

🔧 Installation

The sensors are designed to be easily and securely installed to different kinds of tanks and tankers. After the installation sensors will be ready to send data within requested data collection frequency

Dimensions and Weight

82mm x 92mm x 55mm
(91mm x 100mm at longest)
400 g

Remote Measurement Performance

Accuracy: +/- 1%
Resolution: 0.1cm

Environmental Endurance

IP Rating:
IP 68

Operational Temperature:

-40°C - +85 °C

Power Requirements

Battery Type:

High Performance Lithium Battery

Battery Life:

+4 years*

Wireless Connectivity

Quad-Band GSM 850/900/1800/1900MHz
LoRaWAN, NB-IoT connectivity options
Remotely Controllable Software

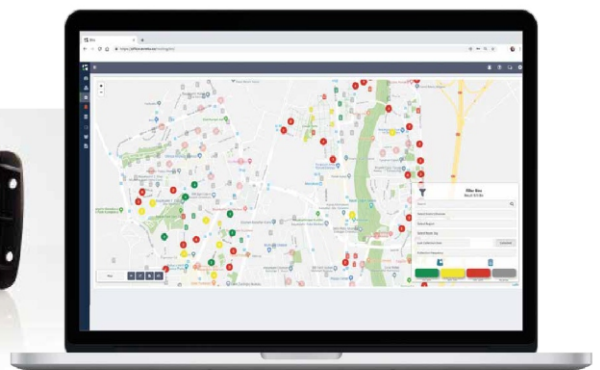
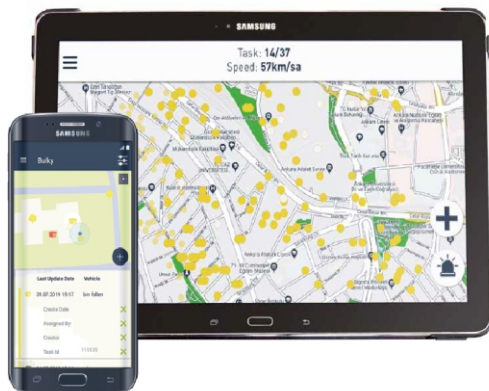
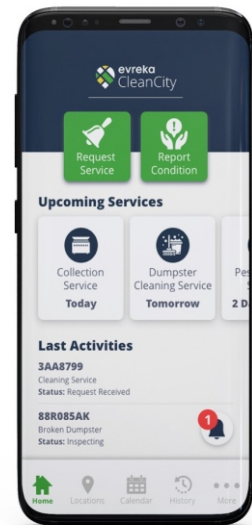
Physical Characteristics Body:

PolyPropylene mixed with GlassFiber

Inserts:

Special Mounting Attachment

MODULES & USER INTERFACES





Head Quarter

Moment Plaza
Bestepe Mah. 32. Cad. 4st Floor 1/71
P.O Box : 06560
Yenimahalle - Ankara / Türkiye

Sales Office

Karya Business Center Beşevler Mah.
Yıldırım Cad. 256/A Blok No:19
Nilüfer - Bursa / Türkiye

www.akviagroup.com